

# Chromofy™ A Better Dye for HRM and qPCR

## Real-time PCR in the FAM-channel

Chromofy can be used as an unspecific dye for real-time PCR applications or other applications where staining of dsDNA is desired. It is a monomeric asymmetric cyanine dye developed by TATAA Biocenter. The dye has absorbance and emission wavelengths suitable for the FAM channel on most common real-time PCR instrumentation, and shows a strong fluorescence increase when binding to dsDNA. Chromofy is not inhibitory to the PCR reaction and has been demonstrated to be compatible with most commercially available mastermixes.

## Chromofy™ in high-throughput format

Chromofy is the superior dye for use on BioMark, the high-throughput platform from Fluidigm. It performs better than EvaGreen and clearly outperforms SYBR green I. Please visit our website or contact us for more information and protocol (order@tataa.com).

## Chromofy™ in high-resolution melt

Chromofy has demonstrated excellent performance in SNP genotyping with High-Resolution Melt. It has also been used for methylation analysis with High-Resolution Melt and can detect down to 1% methylated DNA in unmethylated background.

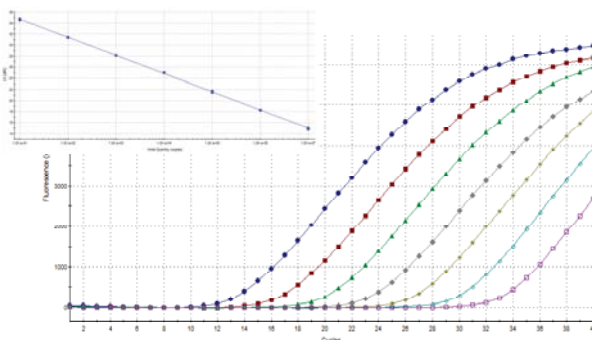


Figure 1: Standard curve of human beta tubulin with 100 % efficiency produced using Chromofy on Stratagene Mx3005.

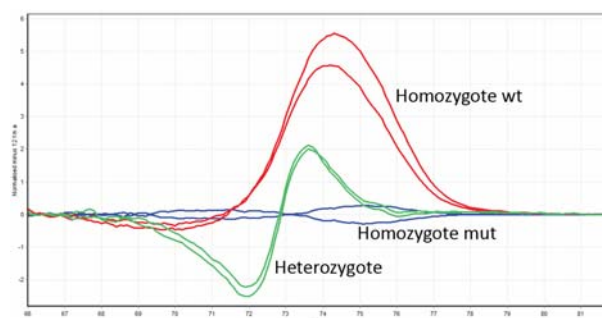


Figure 2: Chromofy was used on the Corbett Rotorgene 6000 to detect a mutation in the Factor V Leiden SNP. Homozygote wild type (G) and homozygous mutant (A) were readily distinguished.

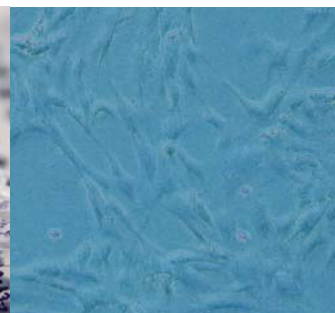
## Ordering information

Please visit [www.tataa.com](http://www.tataa.com) or send us an email at [order@tataa.com](mailto:order@tataa.com).

Chromofy™

6250 reactions

Order # B104



tataabiocenter

TATAA Biocenter AB

Odinsgatan 28, 411 03 Göteborg

Tel: +46 31 761 57 00, Fax: +46 31 15 28 90, E-mail: [order@tataa.com](mailto:order@tataa.com)